



# SWIVEL

## USER GUIDE



EN

# Contents

---

<b>1</b>	<b>Symbol explanation.....</b>	<b>3</b>	<b>8</b>	<b>Storage and disposal.....</b>	<b>25</b>
			8.1	Storage.....	25
			8.2	Disposal.....	25
<b>2</b>	<b>Safety.....</b>	<b>4</b>	<b>9</b>	<b>Contact.....</b>	<b>26</b>
2.1	User Guide.....	4			
2.2	Intended use.....	4			
2.3	Misuse.....	4			
2.4	Safety informations.....	4			
<b>3</b>	<b>Settings.....</b>	<b>5</b>			
3.1	Adjust headrest.....	5			
3.2	Use the insert for newborn babies.....	6			
3.3	Adjust seat.....	6			
<b>4</b>	<b>Use in the vehicle.....</b>	<b>9</b>			
4.1	Fastening type A and B.....	9			
4.2	Secure child seat A (40 – 105 cm).....	9			
4.3	Loosen child seat A (40 – 105 cm).....	12			
4.4	Secure child seat B (100 – 125 cm).....	13			
4.5	Loosen child seat B (100 – 125 cm).....	15			
<b>5</b>	<b>Buckling in and unbuckling.....</b>	<b>16</b>			
5.1	Buckle child in A (40 – 105 cm).....	16			
5.2	Check before every journey A (40 – 105 cm)...	16			
5.3	Unbuckle child A (40 – 105 cm).....	17			
5.4	Buckle child in B (100 – 150 cm).....	17			
5.5	Check before every journey B (100 – 125 cm).	18			
5.6	Unbuckle child B (100 – 150 cm).....	18			
<b>6</b>	<b>Changing the fastening type.....</b>	<b>19</b>			
6.1	Changing to fastening type B (100 – 125 cm).	19			
6.2	Changing to fastening type A (40 – 105 cm)...	21			
<b>7</b>	<b>Cleaning and maintenance.....</b>	<b>23</b>			
7.1	Cover.....	23			
7.2	Shoulder pads.....	23			
7.3	Clean belt lock.....	24			
7.4	Troubleshooting.....	24			

# 1 Symbol explanation

---

## Warning signs

Warning signs are used in this user guide in order to advise of potential danger situations. The warning signs inform you about the following items:

- Level of danger,
- Type and source of danger,
- Consequences if disregarded,
- Measures to prevent danger.

Warning signs are shown as follows:

### **WARNING**

#### **Type and source of danger**

Consequences if disregarded

- ▶ Measures to prevent danger

Level of danger	Meaning
DANGER!	Highlights dangerous situations which, if not avoided, lead to serious injuries or death.
WARNING!	Indicates a dangerous situation which, if not avoided, can lead to serious injuries or death.
CAUTION!	Indicates a dangerous situation which, if not avoided, can lead to slight to moderate injuries.
NOTE	Indicates actions that can lead to damage.

## Signs and symbols

-  Highlights important information for you.

## Specific actions

- ▶ ...

### **Action**

1. Demands action from you.
2. Defined sequence of actions.
3. ...

### **Result of action**

- ✓ There is where you will find the result of a sequence of actions.

## 2 Safety

### 2.1 User Guide



This user guide is a component of the product and contributes to its safe use. Non-compliance may lead to serious or even fatal injuries. If there are uncertainties, do not use the product and immediately contact your retailer.

- ▶ Read the operating instructions.

### 2.2 Intended use

This product has been designed, tested and approved corresponding to the requirements of UN R129/03. It is designed for securing a child in a vehicle.

This child seat is approved for children with a height from 40 cm to 125 cm. So that the child is optimally secured, there are two types of fastening, **A** and **B**. Each fastening type has been developed for a defined size range. Secure the child seat corresponding to the size of the child.

Size of the child	Fastening type
40 cm - 105 cm	<b>A</b>
 Maximum weight 18 kg.	
 You must use the insert for newborn babies for body sizes up to 75 cm.	
100 cm - 125 cm	<b>B</b>

Use the product on forward-facing car seats.

This approval is invalidated if you make any modifications to this product. Changes may only be made by the manufacturer. The stickers on the product are an important component of the product.

- ▶ Do not make any changes to the product.
- ▶ Do not remove any stickers from the product.

### 2.3 Misuse

- ▶ Do not use the product as a toy.
- ▶ Do not use the product as a chair outside the vehicle.
- ▶ Only secure the child seat with fastening points described in these operating instructions.
- ▶ Never secure the product with a 2-point seat belt.
- ▶ Ensure that the product is not trapped between hard objects (car door, seat rails, etc.).
- ▶ Keep product away from moisture, wet conditions, liquids, dust and salt spray.
- ▶ Do not lean heavy objects on the product.

- ▶ Never lubricate or oil parts of the product.
- ▶ Sensitive car seat covers may be damaged. Use the Britax Römer child seat base. These are available separately.

### 2.4 Safety informations

#### Risk of injury from damaged child seat

In the event of an accident at a collision speed of more than 10 km/h, the child seat may be damaged without the damage being immediately visible. Serious injuries may result from another accident.

- ▶ Replace the product after an accident.
- ▶ Have a damaged product inspected (even if it has fallen onto the ground).
- ▶ Regularly check all the important parts for damage.
- ▶ Ensure that all mechanical components work properly.

#### Risk of burns from hot components

Components of the product may become hot in direct sunlight. Children's skin is sensitive and maybe harmed as a result.

- ▶ Protect the product against intensive direct sunlight when not in use.

#### Risk of injury during use

The temperature in a vehicle can rise dangerously quickly. In addition, it is dangerous to leave the vehicle on the side facing the street.

- ▶ Never leave the child unsupervised in the vehicle.
- ▶ Only secure and remove the child seat from the foot-path-side.

#### Risk of injury from unsecured objects

In case of an emergency stop or accident, unsecured objects or people may cause injury to other occupants in the vehicle.

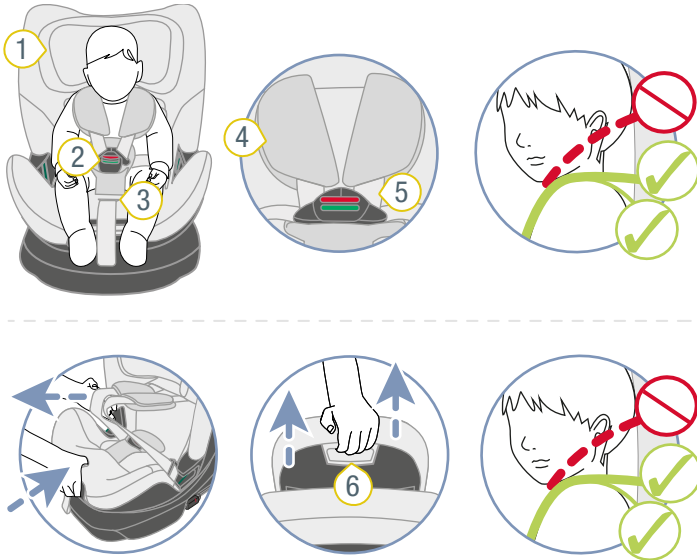
- ▶ Only fasten the product as described in this user guide.
- ▶ Secure backrests of the car seat (e.g. engage foldable rear).
- ▶ Fasten or remove all heavy or sharp-edged objects in the vehicle (e.g. on the parcel shelf).
- ▶ Ensure that everyone in the vehicle has their seatbelts fastened.
- ▶ Ensure that the product is always secured when it is in the vehicle, even if no child is being transported.

# 3 Settings

## 3.1 Adjust headrest

**i** The headrest setting depends on the type of securing (see "Fastening type A and B", page 9).

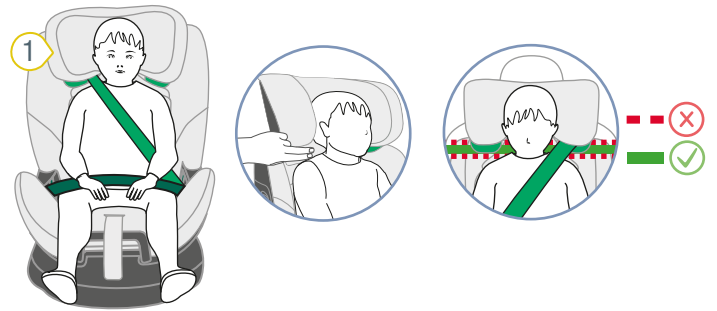
### 3.1.1 Set headrest A (40 – 105 cm)



- 1** Headrest
- 2** Harness buckle
- 3** Adjustment button
- 4** Shoulder pads
- 5** Shoulder strap
- 6** Release button

1. Check that the headrest **1** is adjusted correctly.
    - i** If the shoulder straps are at or slightly above the shoulder height of the child, the headrest is positioned correctly.
      - ▶ If the headrest is not positioned correctly, perform the following steps.
  2. To loosen the belt, press the adjustment button **3** and pull both shoulder straps **5** forwards at the same time.
    - i** The shoulder pads are **not** connected to the shoulder straps. If you pull on the shoulder pads, the belt is **not** loosened. Only pull on the shoulder straps.
  3. Keep the release button **6** pressed and slide the headrest **1** to the correct shoulder height.
  4. Check that the headrest **1** is locked correctly in place by pushing the headrest **1** down.
- ✓ Headrest **1** is adjusted correctly.

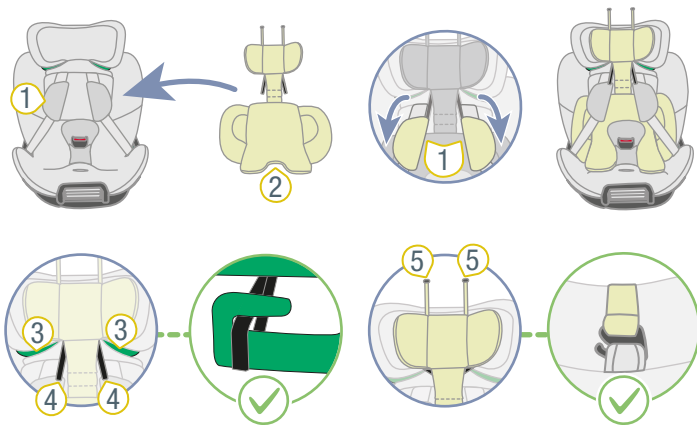
### 3.1.2 Set headrest B (100 – 125 cm)



- 1** Headrest
- 2** Release button

1. Check that the headrest **1** is adjusted to the size of the child.
    - i** If the headrest is two finger-widths above the shoulder height of the child, the headrest is positioned correctly.
      - ▶ If the headrest is not positioned correctly, perform the following steps.
  2. Keep the release button **2** pressed and slide the headrest **1** to the correct shoulder height.
  3. Check that the headrest **1** is locked correctly in place by pushing the headrest **1** down.
- ✓ Headrest **1** is adjusted to the size of the child.

## 3.2 Use the insert for newborn babies



- ① Shoulder pads
- ② Insert for newborn babies
- ③ Light-green belt holder
- ④ Loops
- ⑤ Plastic hooks

ⓘ You must use the insert for newborn babies for body sizes up to 75 cm.

1. Open the harness buckle by pressing the red button.
2. To loosen the belt, press the adjustment button and pull both shoulder straps forwards at the same time.
3. Extend the headrest to its maximum.
4. Place the insert for newborn babies 2 into the child seat.
5. Place both shoulder straps 1 over the insert for newborn babies 2.
6. Hang the two loops 4 in the light-green belt holder 3.
7. Hang the two plastic hooks 5 in the loops 1 on the cover of the headrest.
8. Guide the harness buckle and the padded crotch through the recesses on the lower part of the insert for newborn babies 2.

## 3.3 Adjust seat

### ⚠ WARNING

#### Risk of injury from unsecured seat

If you press the adjustment button, you unlock the angle and rotation mechanism. If one of the two mechanisms is unlocked, in the event of an accident this can lead to serious or even fatal injuries.

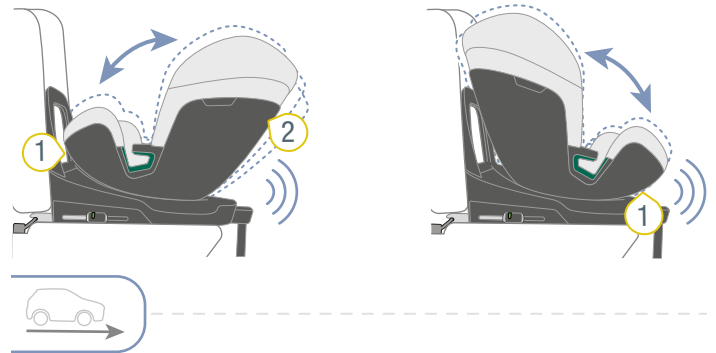
- ▶ Make sure that the angle mechanism is engaged.
- ▶ Make sure that the rotation mechanism is engaged.

ⓘ You can use the seat at different angles of inclination.

ⓘ You can rotate the seat on the base. The rotary function allows the following uses:

- Easier entry and exit for the child (see "Boarding and exit function", page 7).
- Change in direction of travel (see "Change direction of travel", page 7).

### 3.3.1 Adjusting the seat angle



- ① Adjustment button
- ② Seat

1. Pull the adjustment handle 1 forwards and slide the seat 2 to the desired position.
2. Release the adjustment handle 1.
3. To check that the angle mechanism has engaged, pull on the seat 2.
- ✓ The angle mechanism engages with a "Click" sound.
4. To check the mechanism is engaged, turn the seat 2.
- ✓ The rotation mechanism engages with a 'click' sound.

### ⚠ WARNING

#### Risk of injury due to untensioned belts

If the product is already secured in the vehicle with a 3-point seat belt: If you adjust the inclination of the backrest, belt slack may occur in the vehicle belt.

- ▶ Make sure that the vehicle seat belt is tightened and not twisted.

### 3.3.2 Boarding and exit function

#### ⚠ WARNING

##### Risk of injury from front airbag

Airbags are designed to protect adults. The use of a front airbag when a seat is facing backwards can lead to serious or fatal injuries.

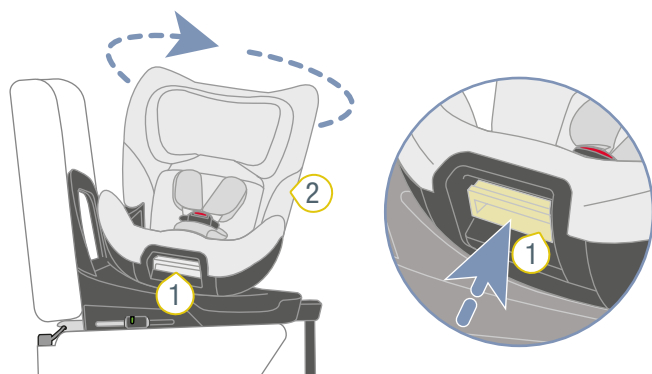
- ▶ Disable front airbag.
- ▶ **Never** use the seat facing backwards with an active front airbag.
- ▶ Note and observe the instructions in the vehicle handbook.

#### ⚠ WARNING

##### Risk of injury if facing in the wrong direction

The alignment of the seat is critical for the safety of the child. If used incorrectly, even just braking can lead to serious or even fatal injuries.

- ▶ **Do not** use a front-facing child seat if your child is smaller than 76 cm or younger than 15 months.
- ▶ Britax Römer recommends use the child seat facing backwards for as long as possible.
- ▶ Before each car journey, ensure that the rotatable seat of the child seat is locked in place.



① Adjustment button      ② Seat

1. Pull the adjustment handle **1** forwards.
2. To make entry and exit easier, turn the seat **2** towards car door.
3. Release the adjustment handle **1**.
4. Secure the child see "Use in the vehicle", page 9.

**INFO** Alternatively, you can use this position of the seat to remove the child.

5. Secure the seat **2** by turning it back.
6. To check the mechanism is engaged, turn the seat **2**.
  - ✓ The rotation mechanism engages with a 'click' sound.
7. To check that the angle mechanism has engaged, pull on the seat **2**.
  - ✓ The angle mechanism engages with a "Click" sound.

#### ⚠ WARNING

##### Risk of injury due to untensioned belts

If the product is already secured in the vehicle with a 3-point seat belt: If you adjust the inclination of the backrest, belt slack may occur in the vehicle belt.

- ▶ Make sure that the vehicle seat belt is tightened and not twisted.

### 3.3.3 Change direction of travel

#### ⚠ WARNING

##### Risk of injury from front airbag

Airbags are designed to protect adults. The use of a front airbag when a seat is facing backwards can lead to serious or fatal injuries.

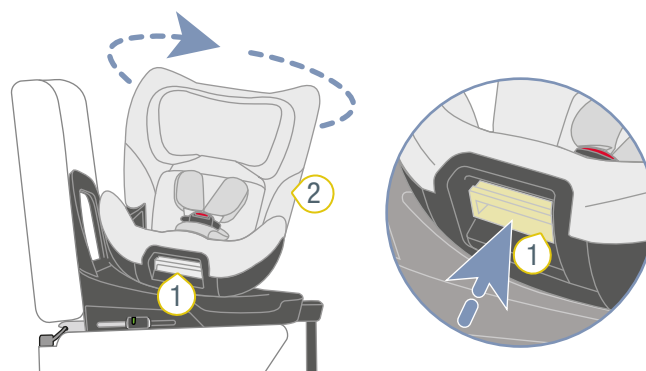
- ▶ Disable front airbag.
- ▶ **Never** use the seat facing backwards with an active front airbag.
- ▶ Note and observe the instructions in the vehicle handbook.

#### ⚠ WARNING

##### Risk of injury if facing in the wrong direction

The alignment of the seat is critical for the safety of the child. If used incorrectly, even just braking can lead to serious or even fatal injuries.

- ▶ **Do not** use a front-facing child seat if your child is smaller than 76 cm or younger than 15 months.
- ▶ Britax Römer recommends use the child seat facing backwards for as long as possible.
- ▶ Before each car journey, ensure that the rotatable seat of the child seat is locked in place.



① Adjustment button      ② Seat

1. Pull the adjustment handle **1** forwards.
2. To change the direction of travel, turn the seat **2** to the desired direction.
3. Release the adjustment handle **1**.
4. To check the mechanism is engaged, turn the seat **2**.
  - ✓ The rotation mechanism engages with a 'click' sound.

5. To check that the angle mechanism has engaged, pull on the seat **2**.
- ✓ The angle mechanism engages with a “Click” sound.

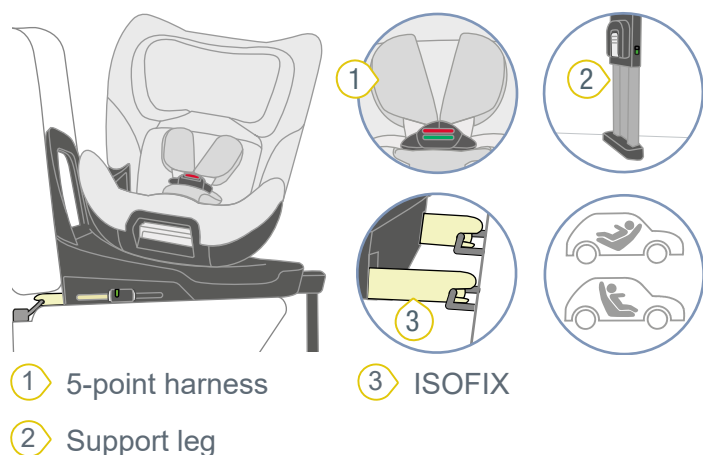


# 4 Use in the vehicle

## 4.1 Fastening type A and B

**i** This product is supplied with the configuration for fastening type **A**. If you want to use fastening type **B**, you have to change the fastening type (see "Changing the fastening type", page 19).

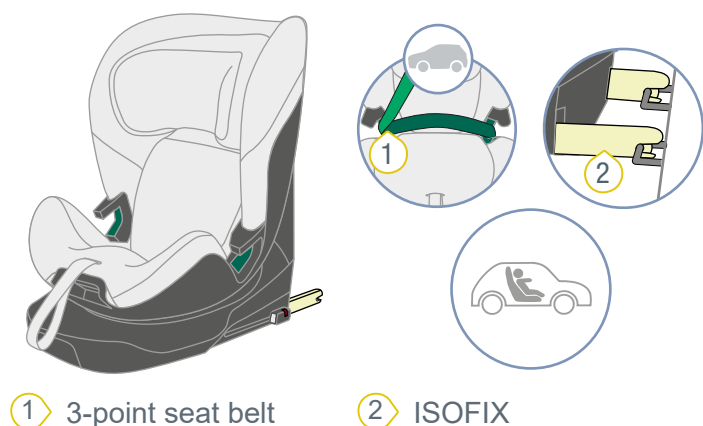
### 4.1.1 Fastening type A (40 – 105 cm)



With fastening type **A**, the child seat is secured with ISOFIX **2** and the support leg **3** on the car seat. The child is secured in the child seat with the 5-point harness **1**. In fastening type **A**, the seat can be turned. Use the child seat as intended with regard to age and size of the child (see "Intended use", page 4).

Fastening type	Design
<b>A1</b>	Rear-facing seat
<b>A2</b>	Forward-facing seat

### 4.1.2 Fastening type B (100 – 125 cm)



With fastening type **B**, the child seat is secured to the car seat with ISOFIX **2**. The child is secured in the child seat with the 3-point seat belt **1** of the car seat. Use of the sup-

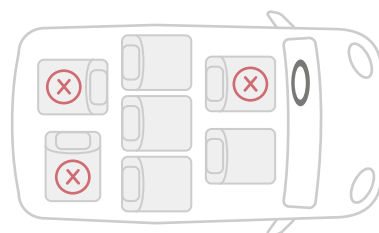
port leg is not approved for fastening type **B**. Use the child seat facing forwards. Use the child seat as intended with regard to age and size of the child (see "Intended use", page 4).

## 4.2 Secure child seat A (40 – 105 cm)

### 4.2.1 Select seat

1. Note and observe the vehicle handbook.

**INFO** Only car seats arranged in the direction of travel are approved for use.



2. Select a suitable seat.

– Car seats with i-Size approval are suitable.

**INFO** In rare cases, the child seat on car seats with i-Size approval can only be adjusted within limits.

– Car seats, which have been tested and approved by us, are suitable. You can find these in our model list. You can find the model list at:

<https://manuals.britax.com/product/p1060-1>

**INFO** The list of vehicle models has been created in accordance with the requirements of Standard UN R129 and contains the vehicle models, in which the product has been tested as at the date of publication according to the instructions contained in the user guide. However, the information about a specific vehicle model is not a guarantee that the product can be installed in the stated vehicle and customers are advised that they should consult the user guide about the correct installation of the product.

**INFO** If the desired vehicle is not included in the model list, please feel free to contact us (see "Contact", page 26).

3. We recommend positioning the car seats as follows.

**When using on the front seat:**

– Slide the front seat as far back as possible.

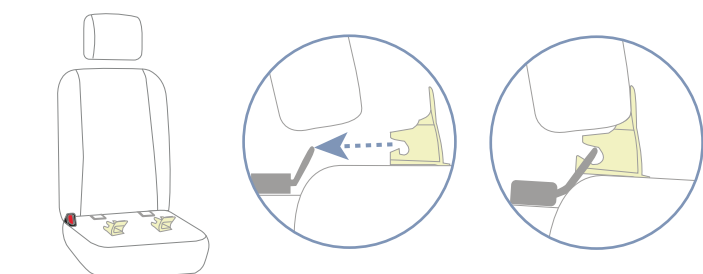
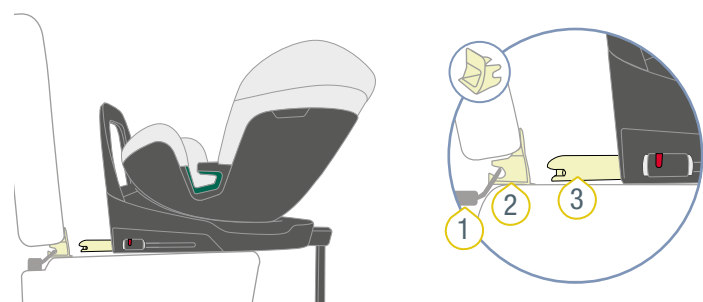
**When using on the rear seat:**

– Slide the back seat as far back as possible.

– Slide the front seat as far forwards as possible.

## 4.2.2 Attach insertion aids

**i** The insertion aids simplify connecting the ISOFIX locking arms of the child seat to the ISOFIX installation bracket on the car seat. Some vehicles already have integrated insertion aids. Check whether your vehicle already has the required insertion aids. If the vehicle does not have them, Britax Römer recommends using the insertion aids. These are included in the scope of delivery of the child seat.

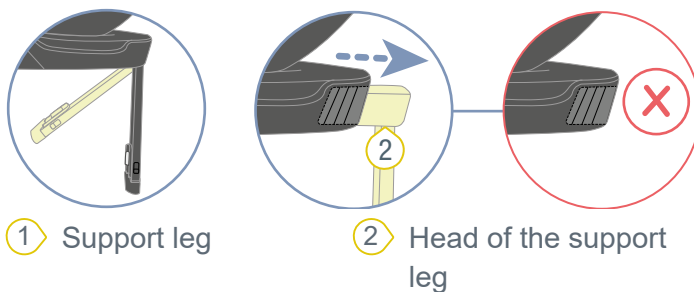
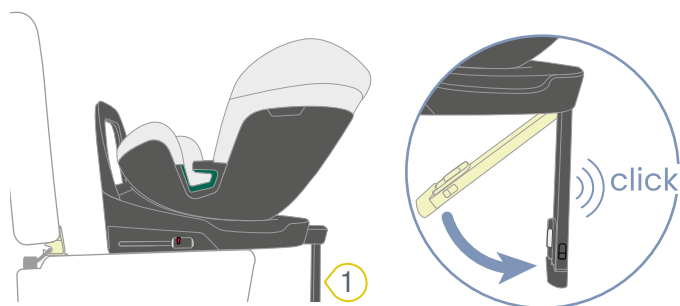


- 1** ISOFIX installation bracket
- 2** Insertion aid
- 3** ISOFIX locking arms bracket

► Clamp the two insertion aids **2**, with the cut-out facing up, to the ISOFIX installation bracket **1** of the car seat.

**i** For car seats with foldable backrests, the insertion aids **2** must be removed before folding the backrest.

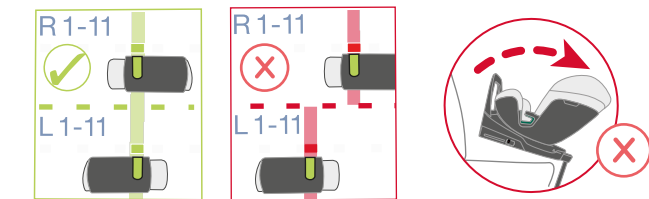
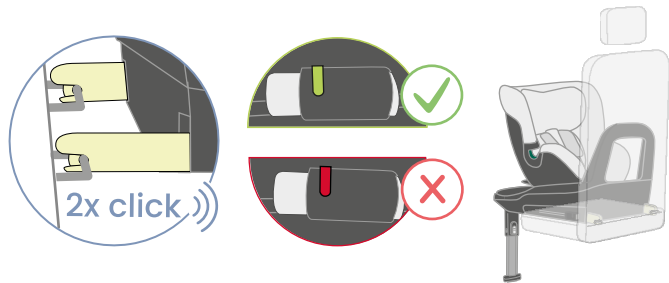
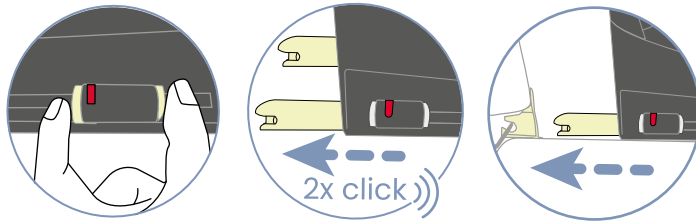
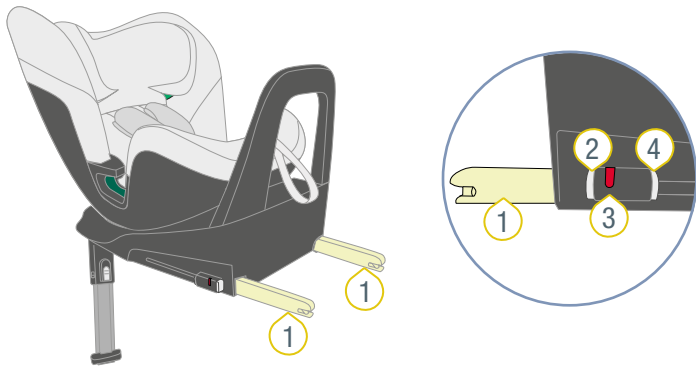
## 4.2.3 Position child seat



- 1** Support leg
- 2** Head of the support leg

1. Make sure that the child seat is fitted with fastening type **A** (see "Changing to fastening type A (40 – 105 cm)", page 21).
2. Unfold the support leg **1** completely.
  - ✓ The support leg **1** audibly locks in place.
3. Pull out the head **2** of the support leg completely.
  - ✓ The head **2** of the support leg audibly engages.
4. Place the child seat on the selected car seat.

#### 4.2.4 Fastening the ISOFIX



- ① ISOFIX locking arms      ③ ISO indicator
- ② Release button            ④ Fastening button

1. Press the locking button 4 and the release button 2 together and slide the ISOFIX locking arm 1 out as far as possible.
  - ✓ The ISOFIX locking arm 1 audibly locks in place.
2. Slide out the second ISOFIX locking arm 1 as far as possible, as well.
  - ✓ The second ISOFIX locking arm 1 audibly locks in place.
  - ✓ Both ISOFIX locking arms 1 are extended to the maximum.
3. Connect the ISOFIX locking arms 1 to the ISOFIX installation bracket on the car seat.
  - ✓ Both ISOFIX locking arms 1 audibly lock in place.
  - ✓ Both ISO indicators 3 are green.

**⚠ WARNING** Risk of injury from unsecured child seat. Make sure that both ISOFIX locking arms are fully locked in place. Both ISO indicators must be green.

4. Clamp the ISOFIX connection by forcefully pushing the child seat into the backrest of the car seat.

**INFO** Clamping the child seat into the car seat reduces the amount of horizontal movement of the child seat. The smaller the possible movement, the better the child will be protected.

5. Increase the tension of the ISOFIX connection by forcefully pushing forwards on the base.

**INFO** We recommend pushing the base alternately to the left and right.

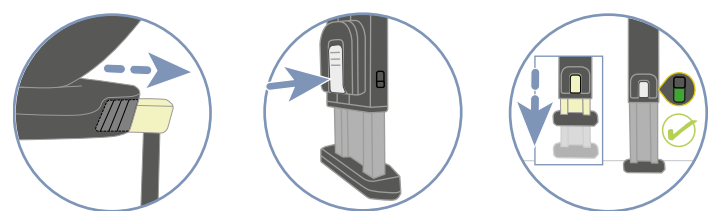
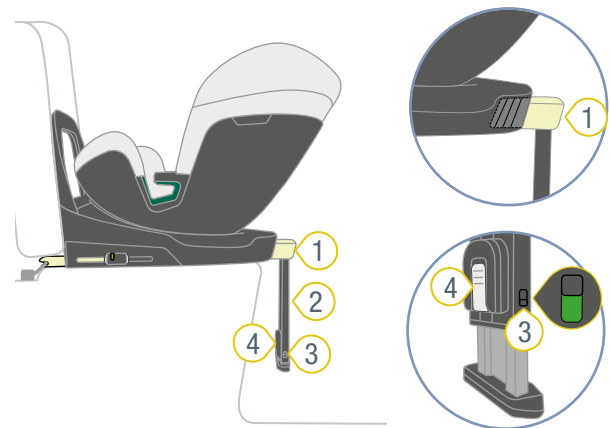
6. Check that the ISOFIX locking arms 1 are both retracted to the same distance.

**INFO** The positions of the ISOFIX locking arms are shown on the product using numbers. These numbers are located above the ISOFIX indicators. Both ISOFIX indicators must show the same number.

7. Check that the ISOFIX locking arms 1 are connected to the ISOFIX installation brackets on both sides by pulling at the child seat.

✓ If neither of the ISOFIX locking arms 1 comes loose, they are both connected to the vehicle.

#### 4.2.5 Setting support leg



- ① Head of the support      ③ support indicator leg
- ② Support leg                ④ Adjustment button

1. Make sure that the head 1 of the support leg is still extended.
2. Make sure that the support leg 2 is still folded out.
3. Keep holding the adjustment button 4 depressed.
4. Extend the support leg 2 to the floor of the vehicle.
5. Release the adjustment button 4.
  - ✓ The adjustment button 4 audibly locks in place.
  - ✓ The protection indicator 3 is green.
  - ✓ The bottom of the base is on the seat of the car seat.

**⚠ WARNING** Risk of injury if the support leg is not stable. **Never** place objects underneath the support leg. Make sure that the support leg is standing stably on the floor of the vehicle.

6. Make sure that the support leg **2** does not raise the bottom of the base from the surface of the car seat.

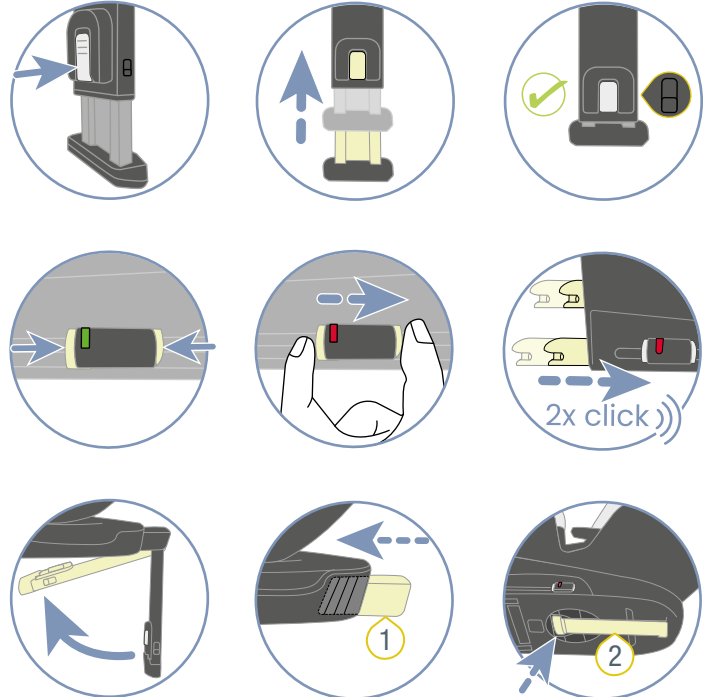
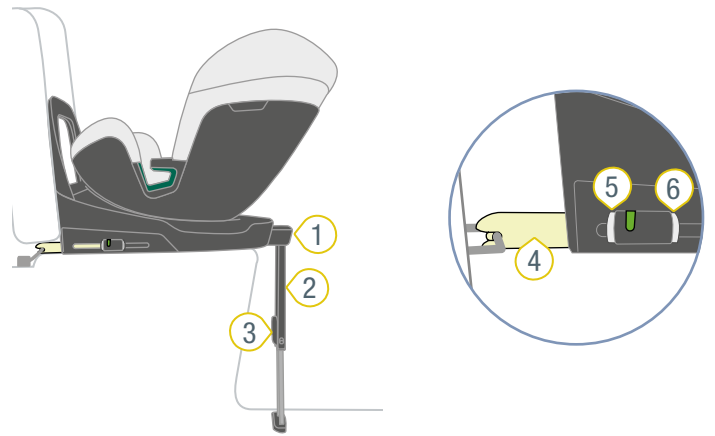
### 4.3 Loosen child seat A (40 – 105 cm)

#### **⚠ WARNING**

##### Risk of injury from unsecured objects

In the case of an emergency stop or accident, the unsecured child seat may cause injury to other occupants in the vehicle.

- ▶ Ensure that the child seat product is always secured when it is in the vehicle, even if no child is being transported.



- |                           |                       |
|---------------------------|-----------------------|
| ① Head of the support leg | ④ ISOFIX locking arms |
| ② Support leg             | ⑤ Release button      |
| ③ Adjustment button       | ⑥ Fastening button    |

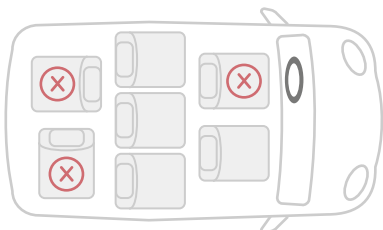
1. Keep holding the adjustment button **3** depressed.
2. Slide the lower section of the support leg **2** into the upper section.
3. Release the adjustment button **3**.  
✓ The support leg **2** is fully retracted.
4. Press the locking button **6** and the release button **5** together and slide the ISOFIX locking arm **4** back into the bottom section of the seat.
5. Slide the second ISOFIX locking arm **4** back into the bottom section of the seat as well.  
✓ Both ISOFIX locking arms **4** are protected against damage.
6. Remove the child seat from the vehicle.
7. Fold up the support leg **2**.
8. Slide the head **1** of the support leg into the base.
9. Stow support leg **2** in the base.

## 4.4 Secure child seat B (100 – 125 cm)

### 4.4.1 Select seat

1. Note and observe the vehicle handbook.

**INFO** Only car seats arranged in the direction of travel are approved for use.



2. Select a suitable seat.

- Car seats with i-Size approval are suitable.

**INFO** In rare cases, the child seat on car seats with i-Size approval can only be adjusted within limits.

- Car seats, which have been tested and approved by us, are suitable. You can find these in our model list. You can find the model list at:

<https://manuals.britax.com/product/p1060-1>

**INFO** The list of vehicle models has been created in accordance with the requirements of Standard UN R129 and contains the vehicle models, in which the product has been tested as at the date of publication according to the instructions contained in the user guide. However, the information about a specific vehicle model is not a guarantee that the product can be installed in the stated vehicle and customers are advised that they should consult the user guide about the correct installation of the product.

**INFO** If the desired vehicle is not included in the model list, please feel free to contact us (see "Contact", page 26).

3. We recommend positioning the car seats as follows.

#### When using on the front seat:

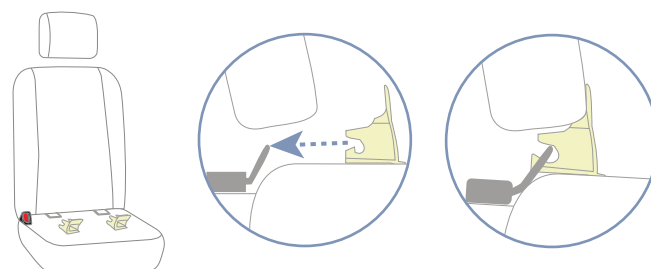
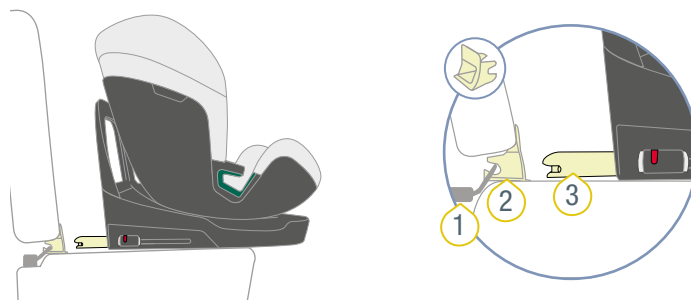
- Slide the front seat as far back as possible.

#### When using on the rear seat:

- Slide the back seat as far back as possible.
- Slide the front seat as far forwards as possible.

### 4.4.2 Attach insertion aids

- i** The insertion aids simplify connecting the ISOFIX locking arms of the child seat to the ISOFIX installation bracket on the car seat. Some vehicles already have integrated insertion aids. Check whether your vehicle already has the required insertion aids. If the vehicle does not have them, Britax Römer recommends using the insertion aids. These are included in the scope of delivery of the child seat.

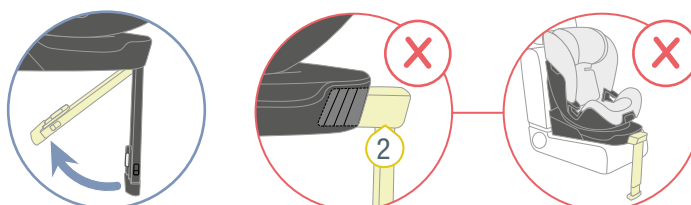
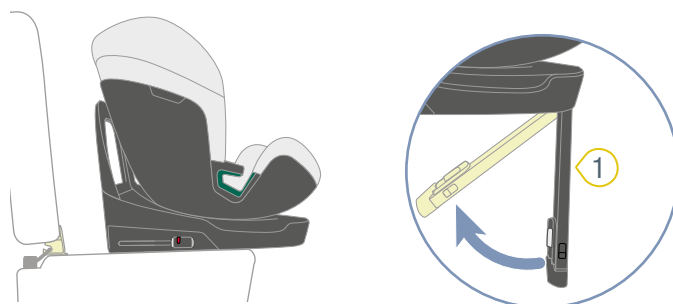


- ① ISOFIX installation
- ② Insertion aid
- ③ ISOFIX locking arms bracket

- ▶ Clamp the two insertion aids 2, with the cut-out facing up, to the ISOFIX installation bracket 1 of the car seat.

- i** For car seats with foldable backrests, the insertion aids 2 must be removed before folding the backrest.

### 4.4.3 Position child seat

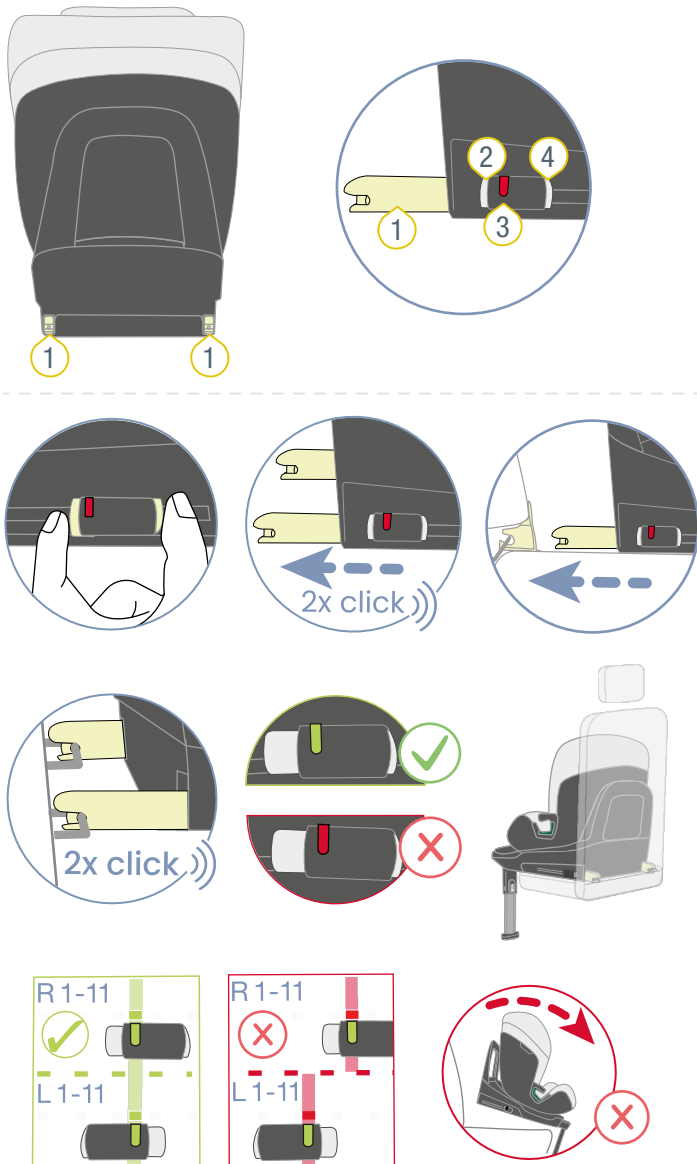


- ① Support leg
- ② Head of the support leg

1. Make sure that the child seat is fitted with fastening type B (see "Changing to fastening type B (100 – 125 cm)", page 19).
2. Make sure that the support leg 1 is folded in.

3. Make sure that the head **2** of the support leg is retracted.
4. Place the child seat on the selected car seat.

#### 4.4.4 Fastening the ISOFIX



- ① ISOFIX locking arms      ③ ISOFIX indicator
- ② Release button            ④ Fastening button

1. Press the locking button **4** and the release button **2** together and slide the ISOFIX locking arm **1** out as far as possible.
  - ✓ The ISOFIX locking arm **1** audibly locks in place.
2. Slide out the second ISOFIX locking arm **1** as far as possible, as well.
  - ✓ The second ISOFIX locking arm **1** audibly locks in place.
  - ✓ Both ISOFIX locking arms **1** are extended to the maximum.
3. Connect the ISOFIX locking arms **1** to the ISOFIX installation bracket on the car seat.
  - ✓ Both ISOFIX locking arms **1** audibly lock in place.
  - ✓ Both ISOFIX indicators **3** are green.

**⚠ WARNING** Risk of injury from unsecured child seat. Make sure that both ISOFIX locking arms are fully locked in place. Both ISOFIX indicators must be green.

4. Clamp the ISOFIX connection by forcefully pushing the child seat into the backrest of the car seat.

**INFO** Clamping the child seat into the car seat reduces the amount of horizontal movement of the child seat. The smaller the possible movement, the better the child will be protected.

5. Increase the tension of the ISOFIX connection by forcefully pushing forwards on the base.

**INFO** We recommend pushing the base alternately to the left and right.

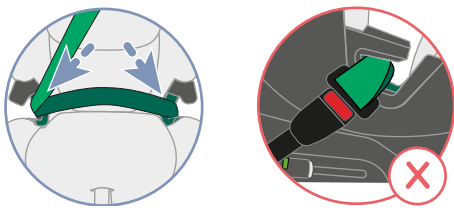
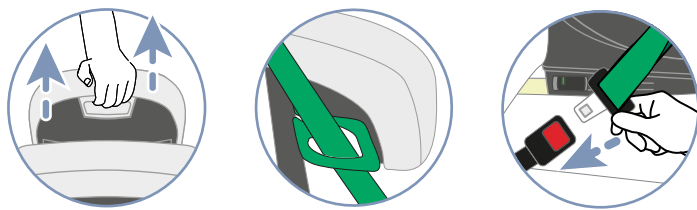
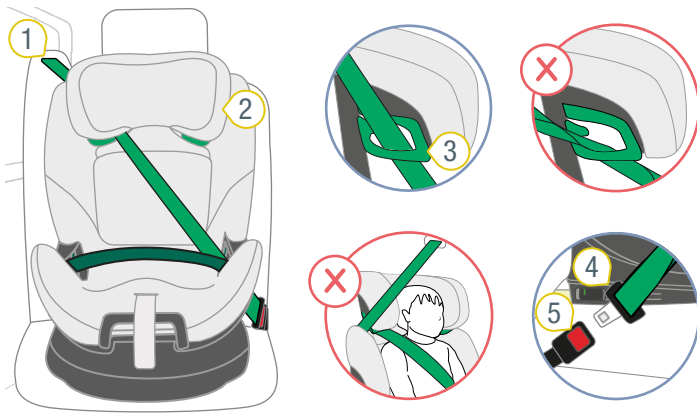
6. Check that the ISOFIX locking arms **1** are both retracted to the same distance.

**INFO** The positions of the ISOFIX locking arms are shown on the product using numbers. These numbers are located above the ISOFIX indicators. Both ISOFIX indicators must show the same number.

7. Check that the ISOFIX locking arms **1** are connected to the ISOFIX installation brackets on both sides by pulling at the child seat.

- ✓ If neither of the ISOFIX locking arms **1** comes loose, they are both connected to the vehicle.

#### 4.4.5 Secure seat belt



- ① Diagonal belt
- ② Headrest
- ③ Light-green belt holder
- ④ Buckle tongue
- ⑤ Seat belt lock

1. Set the headrest 2 to the highest position.
2. Pass the diagonal belt 1 through the light-green belt holder 3 of the headrest 2.
  - ⚠ **WARNING** Risk of injury if belt fitted incorrectly. The diagonal belt must face away from the alignment of the child seat. Other belt routes impair the protective effect.
    - ▶ Check the belt route.
    - ▶ Make sure that diagonal belt faces against the direction of the child seat.
    - ▶ Do **not** use the child seat on the car seat if the belt route faces forwards.
3. Engage the buckle tongue 4 in the seat belt lock 5.
4. Place the lap belt in both dark green belt guides.
5. Place the diagonal belt 1 on the side of the seat belt lock 5 into the dark green belt guide.
  - ⚠ **WARNING** Risk of injury if forces are transferred incorrectly.
    - ▶ Check the position of the seat belt lock.
    - ▶ Do **not** use the child seat on the car seat if the seat belt lock is in the area of the dark green belt guide.

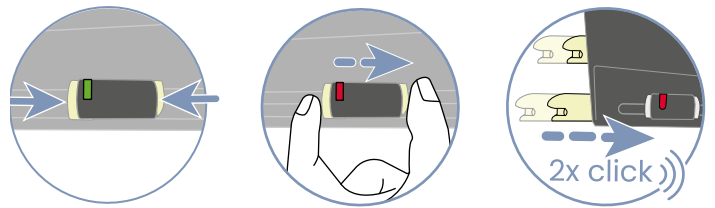
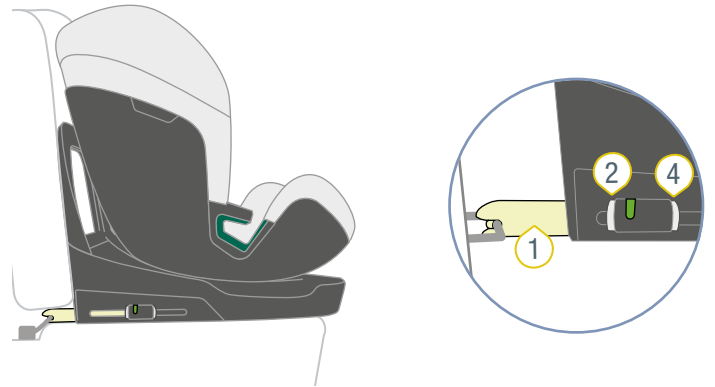
#### 4.5 Loosen child seat B (100 – 125 cm)

### ⚠ WARNING

#### Risk of injury from unsecured objects

In the case of an emergency stop or accident, the unsecured child seat may cause injury to other occupants in the vehicle.

- ▶ Ensure that the child seat product is always secured when it is in the vehicle, even if no child is being transported.



- ① ISOFIX locking arms
- ② Release button
- ③ Fastening button

1. Press the locking button 3 and the release button 2 together and slide the ISOFIX locking arm 1 back into the bottom section of the seat.
  2. Slide the second ISOFIX locking arm 1 back into the bottom section of the seat as well.
- ✓ Both ISOFIX locking arms 1 are protected against damage.

# 5 Buckling in and unbuckling

## 5.1 Buckle child in A (40 – 105 cm)

### ⚠ WARNING

#### Risk of injury from front airbag

Airbags are designed to protect adults. The use of a front airbag when a seat is facing backwards can lead to serious or fatal injuries.

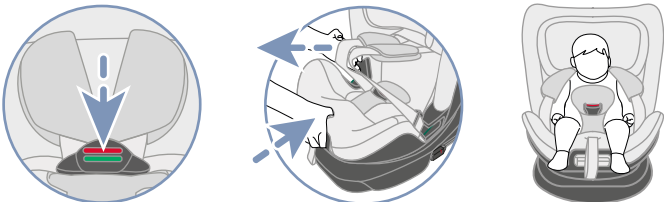
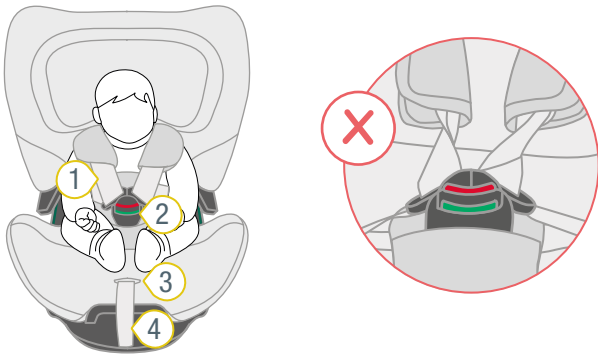
- ▶ Disable front airbag.
- ▶ **Never** use the seat facing backwards with an active front airbag.
- ▶ Note and observe the instructions in the vehicle handbook.

### ⚠ WARNING

#### Risk of injury from slack straps

Slack straps are areas of the seat belt that lie loosely against the child's body. Slack straps have a negative impact on the protective function.

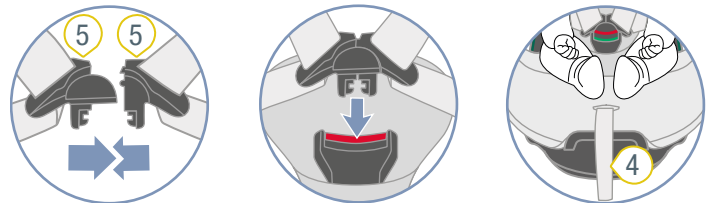
- ▶ Ensure that the straps are tight and not twisted.
- ▶ The child should not wear thick clothing under the belt.



- ① Shoulder straps
- ② Harness buckle
- ③ Adjustment button
- ④ Adjustment belt

1. Make sure that the child seat is secure with fastening type **A** (see "Use in the vehicle", page 9).
2. To loosen the belt, press the adjustment button **3** and pull both shoulder straps **1** forwards at the same time.
3. Open the harness buckle **2** by pressing the red button.
4. Place the harness buckle **2** at the front.
5. Never leave the child unsupervised in the seat.
6. Place the shoulder straps **1** over the child's shoulders.

⚠ **WARNING** Risk of injury if child is secured incorrectly. Make sure that the shoulder straps are not twisted or reversed.



- ④ Adjustment belt
- ⑤ Buckle tongues

7. Bring the two buckle tongues **5** together.
8. Insert the joined buckle tongues **5** into the harness buckle **2**.
- ✓ The buckle tongues **5** audibly lock in place.
9. To prevent slack straps, pull the shoulder straps **1**.
10. Pull at the adjustment belt **4** until the shoulder straps **1** are tight to the child's body.

⚠ **WARNING** Risk of injury to the abdomen (soft area in the stomach). Ensure that the hip straps are positioned as low as possible over your child's hips.

## 5.2 Check before every journey A (40 – 105 cm)

To protect your child, check the following points before each car journey.

1. The child seat and child are secured with fastening type **A**.



2. Both ISOFIX locking arms are locked into the ISOFIX installation brackets.
3. Both ISOFIX locking arms are extended the same distance.
4. Both ISOFIX indicators are green.





5. The support leg is stable on the floor of the car.
6. The protection indicator on the support leg is green.
7. The seat audibly locks.
8. The straps are tight to the child's body without restricting the child.
9. The headrest is correctly adjusted.



10. The shoulder pads are in the right position on the child.
11. The straps are **not** twisted and **not** reversed.
12. If using the seat facing backwards, the front airbag is disabled.
13. The child seat is used as intended in respect of the age and size of the child (see "Intended use", page 4).

### ⚠ WARNING

#### Risk of injury due to omitted checks.

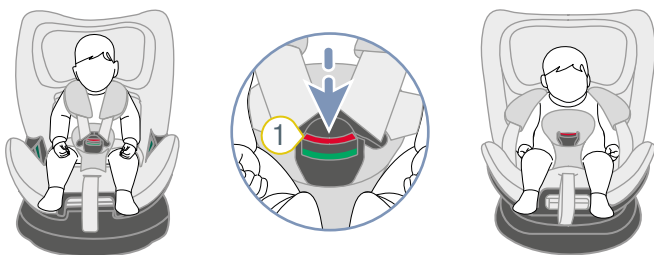
During the journey, the child may try to unbuckle the belt or loosen the child seat. If the child is not secured in the child seat, this can lead to serious or even fatal injuries.

#### If the child or the child seat is not fastened:

- ▶ Immediately stop the vehicle as soon as the traffic situation allows.
- ▶ Make sure that the child seat is secured.
- ▶ Ensure that the child is buckled in.

**i** For the wellbeing of your child, on long journeys we recommend taking regular breaks. Give your child the opportunity to move.

## 5.3 Unbuckle child A (40 – 105 cm)



### ① Harness buckle

1. Open the harness buckle **1** by pressing the red button.
2. Take the child out of the child seat.

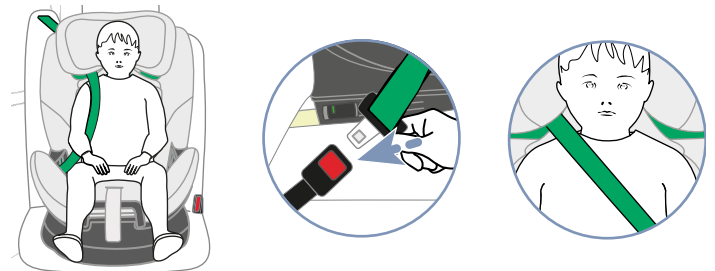
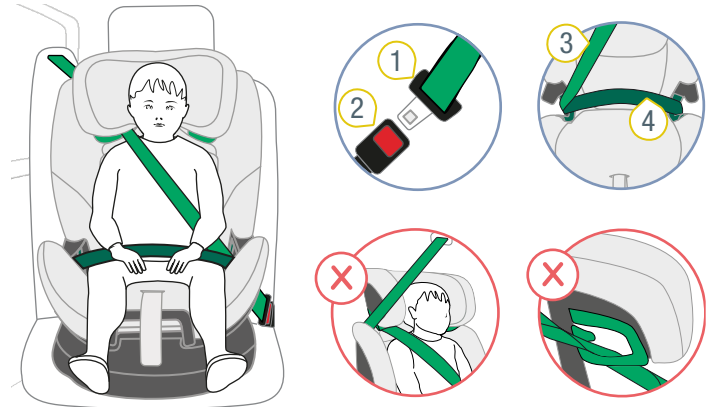
## 5.4 Buckle child in B (100 – 150 cm)

### ⚠ WARNING

#### Risk of injury from slack straps

Slack straps are areas of the seat belt that lie loosely against the child's body. Slack straps have a negative impact on the protective function.

- ▶ Ensure that the straps are tight and not twisted.
- ▶ The child should not wear thick clothing under the belt.



- ① Buckle tongue
- ② Seat belt lock
- ③ Diagonal belt
- ④ Lap belt
- ⑤ Dark green belt guide

1. Make sure that the child seat is secured with fastening type **B** (see "Use in the vehicle", page 9).
2. Leave space in the child for the child.
3. Engage the buckle tongue **1** in the seat belt buckle **2**.
4. Place the lap belt **4** into the two dark green belt guides **5**.
5. Place the diagonal belt **3** on the side of the seat belt lock **2** into the dark green belt guide **5**.

**⚠ WARNING** Make sure that the lap belt is **not** twisted.

**▲ WARNING** Risk of injury to the abdomen (soft area in the stomach).

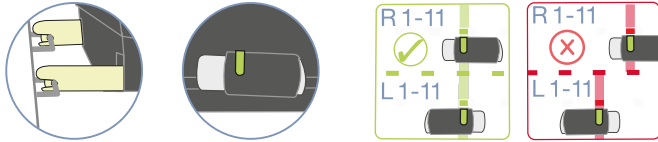
Ensure that the lap belt is as low as possible over your child's hips.

6. Tighten the seat belt by pulling on the diagonal belt **3**.

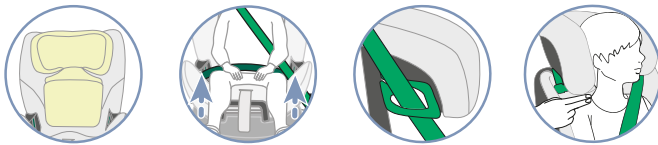
## 5.5 Check before every journey B (100 – 125 cm)

To protect your child, check the following points before each car journey.

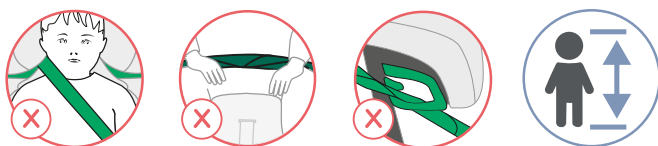
1. The child seat and child are secured with fastening type **B**.



2. Both ISOFIX locking arms are locked into the ISOFIX installation brackets.
3. Both ISOFIX locking arms are in the same position.
4. Both ISOFIX indicators are green.



5. The headrest is correctly adjusted.
6. The lap belt passes through both dark-green belt guides.
7. The diagonal belt is to the side of the seat belt lock in the dark-green belt guide.
8. The diagonal belt is in the light-green diagonal belt holder.
9. The diagonal belt passes centrally over the child's collar bone



10. The diagonal belt does **not** pass over the child's neck.
11. The 3-point seat belt is **not** twisted.
12. The child seat is used as intended in respect of the age and size of the child (see "Intended use", page 4).

## ▲ WARNING

### Risk of injury due to omitted checks.

During the journey, the child may try to unbuckle the belt or loosen the child seat. If the child is not secured in the child seat, this can lead to serious or even fatal injuries.

### If the child or the child seat is not fastened:

- ▶ Immediately stop the vehicle as soon as the traffic situation allows.
- ▶ Make sure that the child seat is secured.
- ▶ Ensure that the child is buckled in.

ⓘ For the wellbeing of your child, on long journeys we recommend taking regular breaks. Give your child the opportunity to move.

## 5.6 Unbuckle child B (100 – 150 cm)

## ▲ WARNING

### Risk of injury from unsecured objects

In the case of an emergency stop or accident, the unsecured child seat may cause injury to other occupants in the vehicle.

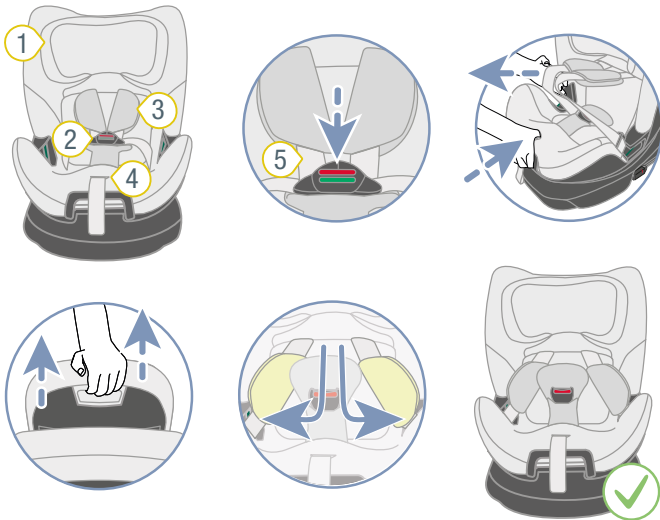
- ▶ Ensure that the child seat product is always secured when it is in the vehicle, even if no child is being transported.
- ▶ To unbuckle the child, press the release button on the seat belt lock.

# 6 Changing the fastening type

## 6.1 Changing to fastening type B (100 – 125 cm)

**i** We recommend using fastening type A for as long as possible. Only use fastening type B when your child is bigger than 105 cm.

### 6.1.1 Preparing the change



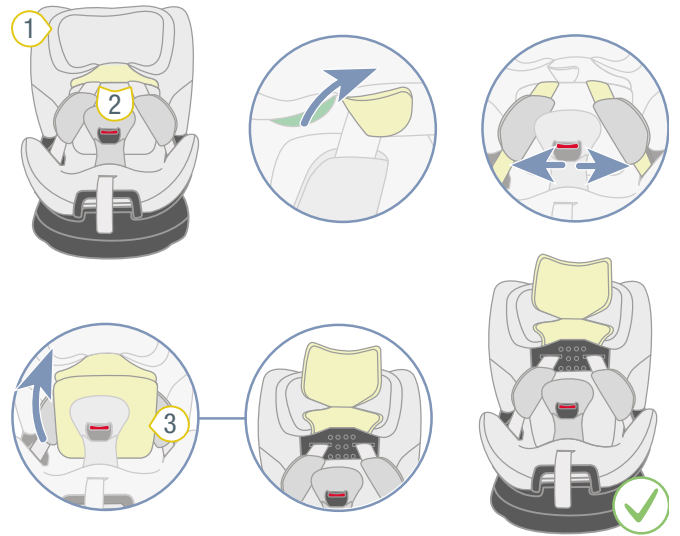
- ① Headrest
- ② Shoulder strap
- ③ Shoulder pads
- ④ Adjustment button
- ⑤ Harness buckle

1. Open the harness buckle 5.
2. To loosen the belt, press the adjustment button 4 and pull both shoulder straps 2 forwards at the same time.

**i** The shoulder pads are **not** connected to the shoulder straps. If you pull on the shoulder pads, the belt is **not** loosened. Only pull on the shoulder straps.

3. Extend the headrest 1 to its maximum.
4. Place the buckle tongue in the dark green belt guides.

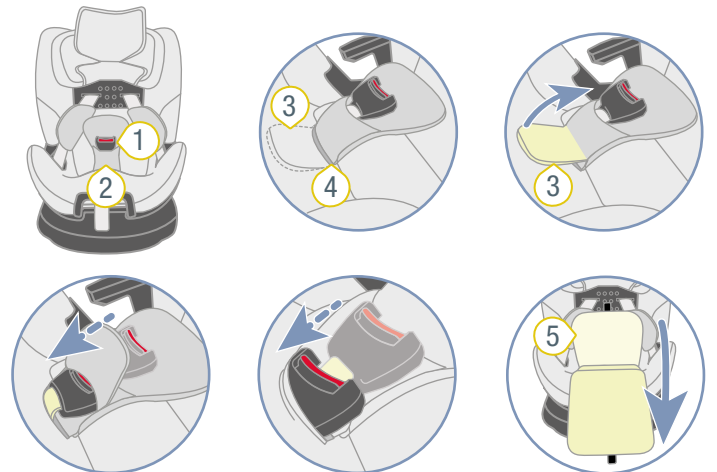
### 6.1.2 Loosen shoulder straps from the headrest.



- ① Headrest
- ② Shoulder straps
- ③ Cover of the headrest

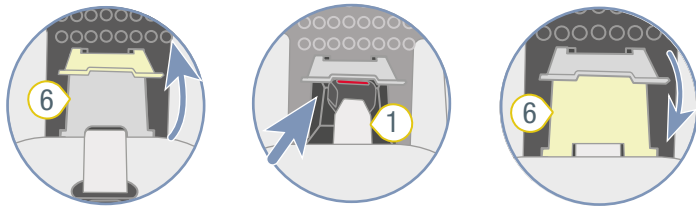
1. Push the shoulder straps 2 away from the cover the headrest 3.
2. Fold the cover of the headrest 3 up.

### 6.1.3 Stow harness buckle



- ① Harness buckle
- ② Padded crotch
- ③ Padded tongue
- ④ Slot
- ⑤ Cover

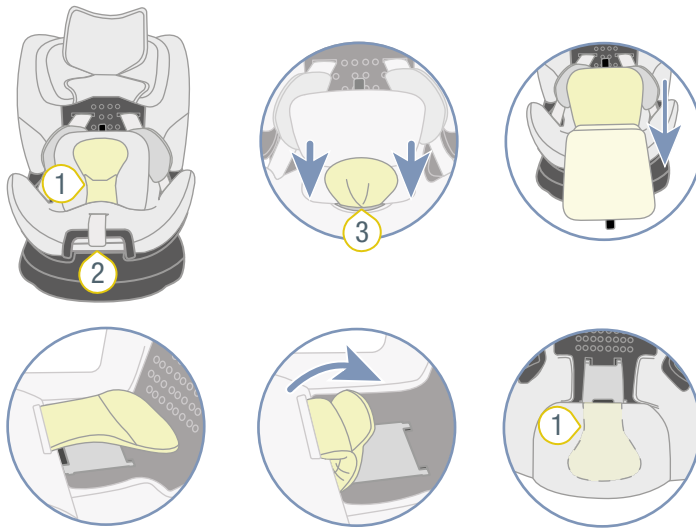
1. Pull the padded tongue 3 out from the slot 4.
2. Fold the padded tongue 3 up out of the way.
3. Pull the padded crotch 2 away from the harness buckle 1.
4. Pull the harness buckle 1 through the slot 4.
5. Fold the cover 5 forwards.



- ① Harness buckle
- ⑥ Compartment

6. Open the compartment 6.
7. Stow the harness buckle 1 in the compartment 6.  
**INFO** The padded crotch 2 cannot be stowed in the compartment 6.
8. Close the compartment 6.

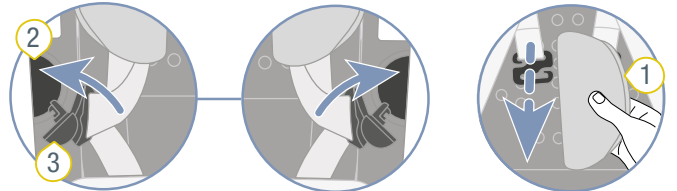
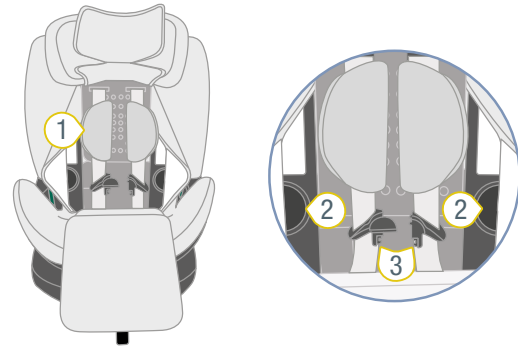
### 6.1.4 Stow padded crotch



- ① Padded crotch
- ② Adjustment button
- ③ Slot

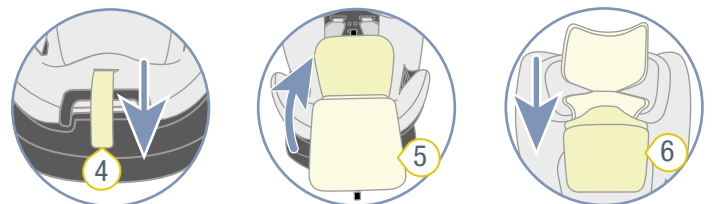
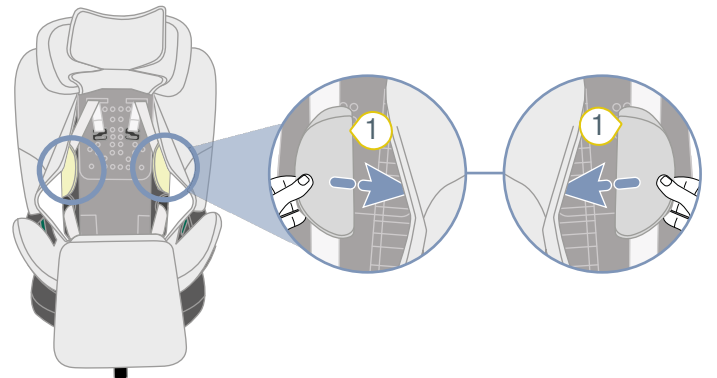
1. Pull the padded crotch 1 through the slot 3 under the cover.
2. Position the padded crotch 1 in the direction of the adjustment button 2.

### 6.1.5 Stow 5-point seat belt



- ① Shoulder pads
- ② Recess
- ③ Buckle tongue

1. Place the buckle tongues 3 into the recesses 2.
2. Open the two shoulder pads 1.
3. Loosen the shoulder pads 1 (see "Shoulder pads", page 23).

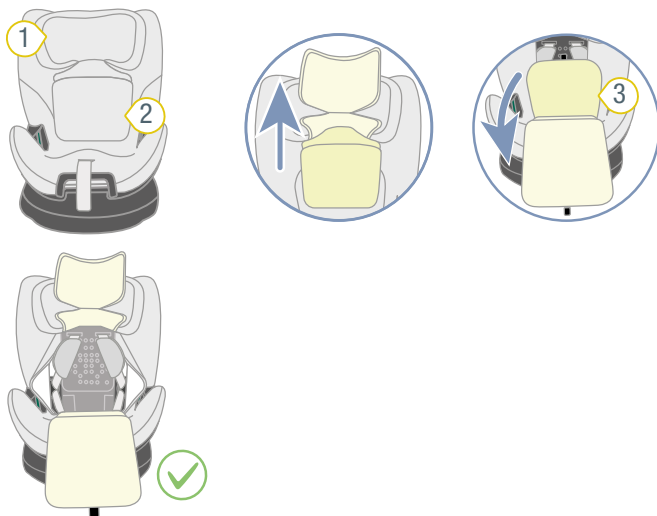


- ① Shoulder pads
- ④ Adjustment belt
- ⑤ Cover
- ⑥ Cover of the headrest

4. Slide the shoulder pads 1 to the side under the cover the backrest.
  5. Tighten the harness by pulling on the adjustment belt 4.
  6. Fold back the cover 5.
  7. Fold down the cover 6 of the headrest.
- ✓ The child seat is fitted with fastening type **B**.

## 6.2 Changing to fastening type A (40 – 105 cm)

### 6.2.1 Preparing the change

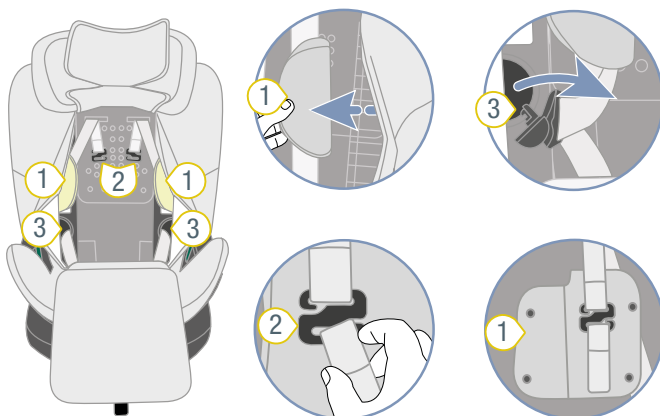


① Headrest                      ③ Cover

② Cover of the headrest

1. Fold the cover of the headrest 2 up.
2. Pull the cover 3 forwards.

### 6.2.2 Attach 5-point harness

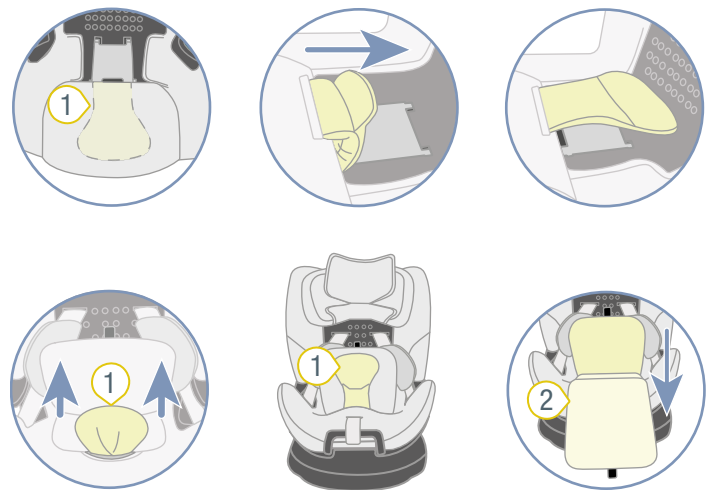


① Shoulder pads              ③ Buckle tongue

② Hooks

1. To loosen the belt, press the adjustment button and pull both shoulder straps forwards at the same time.
2. Remove the buckle tongues 3 from the recesses.
3. Remove the shoulder pads 1 from the side bolsters.
4. Attach the shoulder pads 1 (see "Shoulder pads", page 23).

### 6.2.3 Attach padded crotch

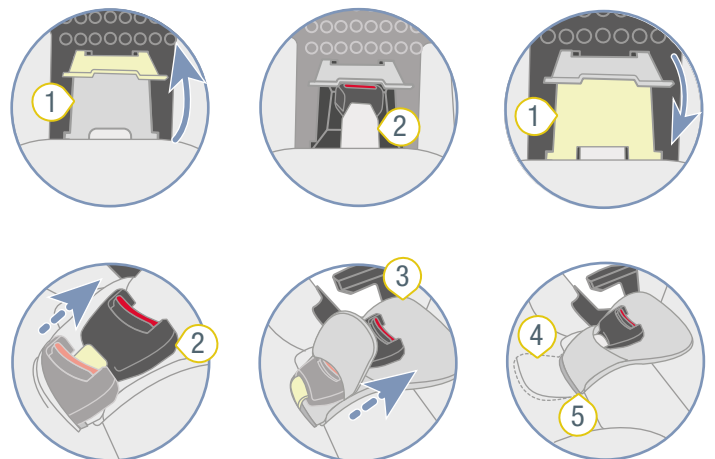


① Padded crotch

② Cover

1. Pull the padded crotch 1 through the slot of the cover 2.
2. Fold the cover 2 forwards.

### 6.2.4 Attach harness buckle



① Compartment

④ Padded tongue

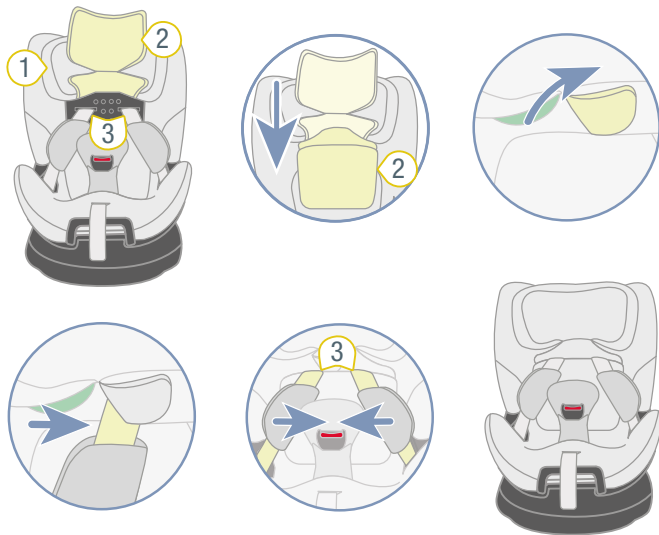
② Harness buckle

⑤ Slot

③ Padded crotch

1. Open the compartment 1.
2. Remove the harness buckle 2.
3. Close the compartment 1.
4. Pull the harness buckle 2 through the slot 5.
5. Pull the harness buckle 2 through the padded crotch 3.
6. Slide the padded tongue 4 through the slot 5.

## 6.2.5 Connect shoulder straps with the headrest.



1. Fold down the cover of the headrest **1**.
  2. Place the shoulder straps **2** into the slots of the headrest.
- ✓ The child seat is fitted with fastening type **A**.

# 7 Cleaning and maintenance

## 7.1 Cover

### 7.1.1 Remove cover

**i** The cover of the child seat comprises multiple parts.

1. Loosen all fastenings.
2. Pull the individual parts of the cover from the child seat.

### 7.1.2 Clean cover

**i** You can remove the following covers and wash them in the washing machine:

- ▶ Cover of the headrest.
- ▶ Seat cover.

- ▶ Note the instructions on the cover's washing label.
- ▶ Wash the cover at 30 °C with a mild detergent on the washing machine's fine wash programme.
- ▶ You can remove the shoulder pads and wash them with like warm soapy water.
- ▶ You can clean the plastic parts and straps with soapy water.
- ▶ Do not use strong cleaning agents (such as solvents).

### 7.1.3 Attach cover

#### **⚠ WARNING**

##### **Risk of injury due to missing seat cover**

The seat cover is an integral safety component of the child seat. If the seat cover is not used, this may lead to serious or even fatal injuries.

- ▶ Never use the child seat without the correct seat cover.
- ▶ Only use the original Britax Römer replacement seat cover.
- ▶ Replacement seat covers are available from your retailer.

- ▶ To fit the cover again, follow the steps in the reverse order.

#### **⚠ WARNING**

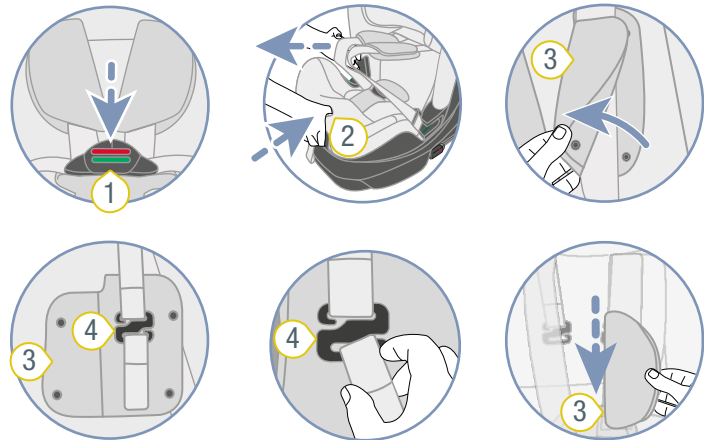
##### **Risk of injury due to twisted straps.**

Twisted straps have a negative impact on the protective function.

- ▶ Ensure that the straps are tight and not twisted.
- ▶ Ensure that the straps are fitted correctly in the belt slots of the cover.

## 7.2 Shoulder pads

### 7.2.1 Remove shoulder pads



- 1** Harness buckle      **3** Shoulder pads  
**2** Adjustment button      **4** Hooks

1. To loosen the belt, press the adjustment button **2** and pull the two shoulder straps forwards at the same time.
  - i** The shoulder pads are **not** connected to the shoulder straps. If you pull on the shoulder pads, the belt is **not** loosened. Only pull on the shoulder straps.
2. Open the shoulder pads **3** using the push-buttons on the side.
3. Unhook the revealed belt loops of the shoulder pads **3** from the hooks **4**.

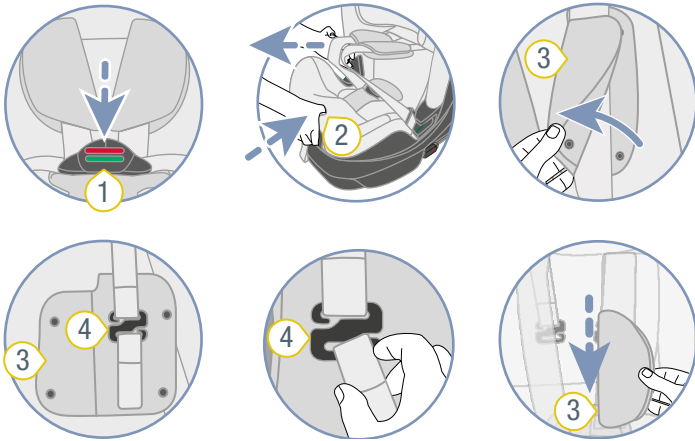
### 7.2.2 Attach shoulder pads

#### **⚠ WARNING**

##### **Risk of injury due to missing shoulder pads.**

The shoulder pads are an integral safety component of the child seat. If the shoulder pads are not used, this may lead to serious or even fatal injuries.

- ▶ Never use the child seat without the correct shoulder pads.
- ▶ Only use the original Britax Römer shoulder pads.



- ① Harness buckle      ③ Shoulder pads  
 ② Adjustment button      ④ Hooks

1. Open the shoulder pad 3 on the hook 4.
2. Place the shoulder straps into the shoulder pad 3.
3. Close the shoulder pads 3.
4. Repeat the steps for the other shoulder pad.

## ⚠ WARNING

### Risk of injury due to twisted shoulder pads

Twisted straps have a negative impact on the protective function.

- ▶ Make sure that the shoulder pads and straps are not twisted or reversed.
- ▶ Ensure that the shoulder straps are in the shoulder pads.

## 7.3 Clean belt lock

1. Soak the belt lock for at least an hour. Use warm water with washing-up liquid.
  - ① Use a small bowl to clean the harness buckle in.
2. Thoroughly rinse and dry the harness buckle.

## 7.4 Troubleshooting

### 7.4.1 Harness buckle

The harness buckle is an integral part of the child seat and fulfils important functions for securing the child. Make sure that the harness buckle works perfectly.

#### Possible problems:

- The buckle tongues are only pushed out of slowly after pressing the red unlocking button.
- The buckle tongues no longer lock in place.
- The buckle tongues lock in place but not audibly.
- The buckle tongues can only be pushed into the harness buckle with difficulty.
- It takes a lot of force to open the harness buckle.

#### Solution:

- ▶ Clean the harness buckle (see "Clean belt lock", page 24).

### 7.4.2 ISOFIX connection

The ISOFIX connection is an integral part of the child seat and fulfils important functions of the child seat. Make sure that the ISOFIX connection works perfectly.

#### Possible problem:

- The ISOFIX locking arms of the child seat cannot be connected to the ISOFIX installation brackets of the vehicle.

#### Solution:

- ▶ Clean the vehicle's ISOFIX installation bracket.



# 8 Storage and disposal

---

## 8.1 Storage

If you do not use the product for a longer period, please note the following information.

- ▶ Store product in a secure and dry location.
- ▶ Keep the storage temperature between 20 and 25 °C.
- ▶ Do not lean heavy objects on the product.
- ▶ Do not store product directly next to sources of heat or in direct sunlight.
- ▶ Protect the product from moisture, wet conditions, liquids, dust and salt spray.

## 8.2 Disposal

- ▶ Do not dismantle the product.
- ▶ Prevent third parties from using the defective product.
  - ① Cut through the shoulder straps.  
Remove the approved label.
- ▶ Please follow the disposal regulations applying in your country.

## 9 Contact

---

If there are any questions, please get in touch:

BRITAX RÖMER Child Safety EMEA

[www.britax-roemer.com](http://www.britax-roemer.com)

[contact@britax.com](mailto:contact@britax.com)

BRITAX RÖMER Kindersicherheit GmbH

Theodor-Heuss-Strasse 9

89340 Leipheim

Germany